

95° 15' 95° 00' 94° 45' 94° 30' 94° 15' 94° 00' 93° 45'

Lake Sabine Study Area



Saffir-Simpson Scale		Legend	
Hurricane Category	Windspeed (MPH)	Evacuation Routes	Risk Area 1
1	74-95	County Boundary	Risk Area 2
2	96-110		Risk Area 3
3	111-130		Risk Area 4
4	131-155		Risk Area 5
5	>155		

Risk Area numbers correspond to hurricane categories. For example, in the event of a Category 3 hurricane, Risk Areas 1, 2, 3 would be threatened.

What To Do When A Hurricane Threatens

Find the location of your home on the map and note the risk area where it is located. Plan to evacuate for any hurricane whose category is equal to or greater than the number of your risk area. Thus, those in Risk Area 5 need to evacuate only from a Category 5 hurricane, but those in Risk Area 1 should evacuate from all hurricanes.

If you live near a risk area boundary and are unsure of which risk area you are in, err on the side of caution. Assume that you are in the risk area that will be affected by a lower hurricane category (i.e., a risk area that has a smaller number and is nearer the coast). If you live in a mobile home in any of the five risk areas, plan to evacuate any time a hurricane threatens.

During a hurricane watch, listen to your radio or television constantly. The Emergency Alert stations for your area are KTRH 740 AM and KPRC 950 AM (Chambers Co.) and KLVJ 560 AM and KFDM Channel 6 (all other counties). The NOAA Weather Radio Stations are 162.550 megahertz (Galveston), 162.400 (Houston), 162.500 (Lake Livingston), 162.475 (Beaumont) and 162.425 (Burkeville).

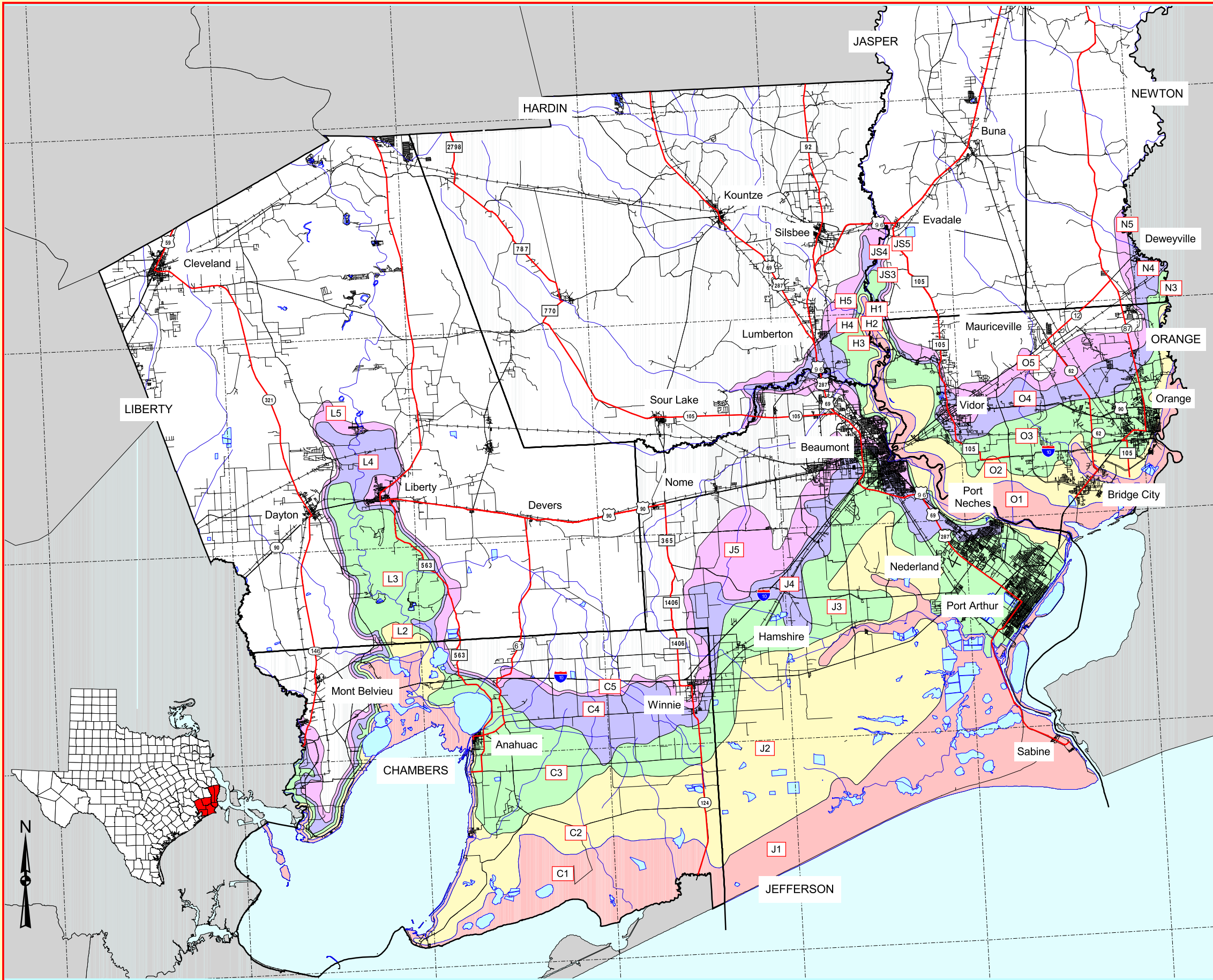
Begin evacuation preparations during the hurricane watch so you will be ready to leave when you receive a hurricane warning. If you will be traveling with young children, older family members, or people with special needs, consider leaving before you receive an official evacuation warning.

When local officials tell you to evacuate, do so immediately. Plan to take the nearest evacuation route (marked by a red line on the map), but be prepared to take an alternate route if your primary evacuation route is congested. Be sure to take plenty of bottled water and snacks with you because the trip may take longer than usual due to congested roads.

Identify a place to stay before you leave. If you plan to stay in a hotel or motel, call ahead to make reservations. If you need to stay in a public shelter, public officials in host cities will let you know where one is located when you arrive. Many hotels and most public shelters do not take pets, so make other arrangements if necessary.



Funded through a grant from the Federal Emergency Management Agency (FEMA)



95° 15' 95° 00' 94° 45' 94° 30' 94° 15' 94° 00' 93° 45'